

# WT 500

The WT 500 is a floor standing coil winding machine suitable for the production of medium size coils and transformers.

It is made of a high quality steel framework and robust mechanical parts. The main spindle is driven by a 2.2kW motor, with a 2 step gear box and HDT pulley reduction fitted as standard to give a large range of speeds and torques. The wire guide carriage is mounted on chrome steel linear guides and is driven by a 400W servo motor and precision ball screw. An encoder on the main spindle provides high performance and exact movement of the wire guide.

The WT 500 machine is supplied with the following parts as standard;

- Fabricated steel base and machined aluminium bed.
- 2 speed gearbox including winding spindle, faceplate & 3 jaw chuck
- Traverse unit including a double wire guide system suitable for round and flat wires
- Interlocking safety guard
- PCWM control system & PC with touch screen
- Push button control panel
- Foot pedal incorporating pedals for speed control slow speed and brake release
- Tailstock support with quick release action



## Technical Spec

Coil Diameter	500 mm
Winding Length	850 mm
Centre Distance	900 mm
Max Load	500 Kg
Pitch Range	0.001 to 150.00

## Power & Dimensions

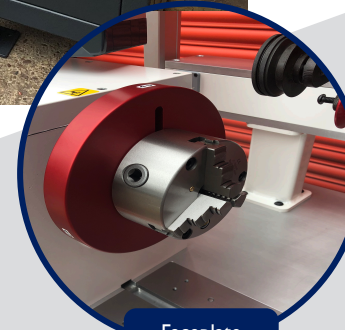
Power	220/240v 50/60 Hz
Size (w x d x h)	1650 x 700 x 1500 mm
Weight	500 Kg

## Speed & Torque

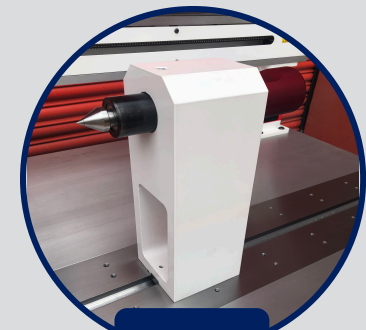
Option 1	183 rpm / 115 Nm 2800 rpm / 7 Nm
Option 2	91 rpm / 230 Nm 1400 rpm / 15 Nm



Wire Guide  
Options



Faceplate  
and Chuck



Tailstock



Tel: +44 (0)1484 663389

E-mail: [sales@windingtechnology.com](mailto:sales@windingtechnology.com)

Web: [www.windingtechnology.com](http://www.windingtechnology.com)